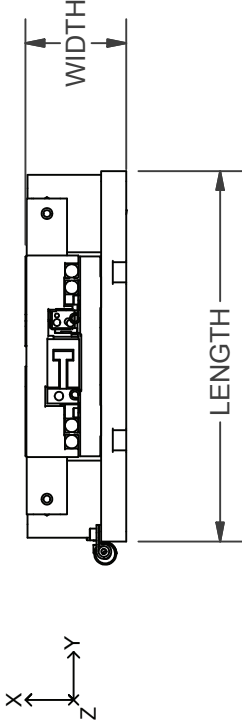
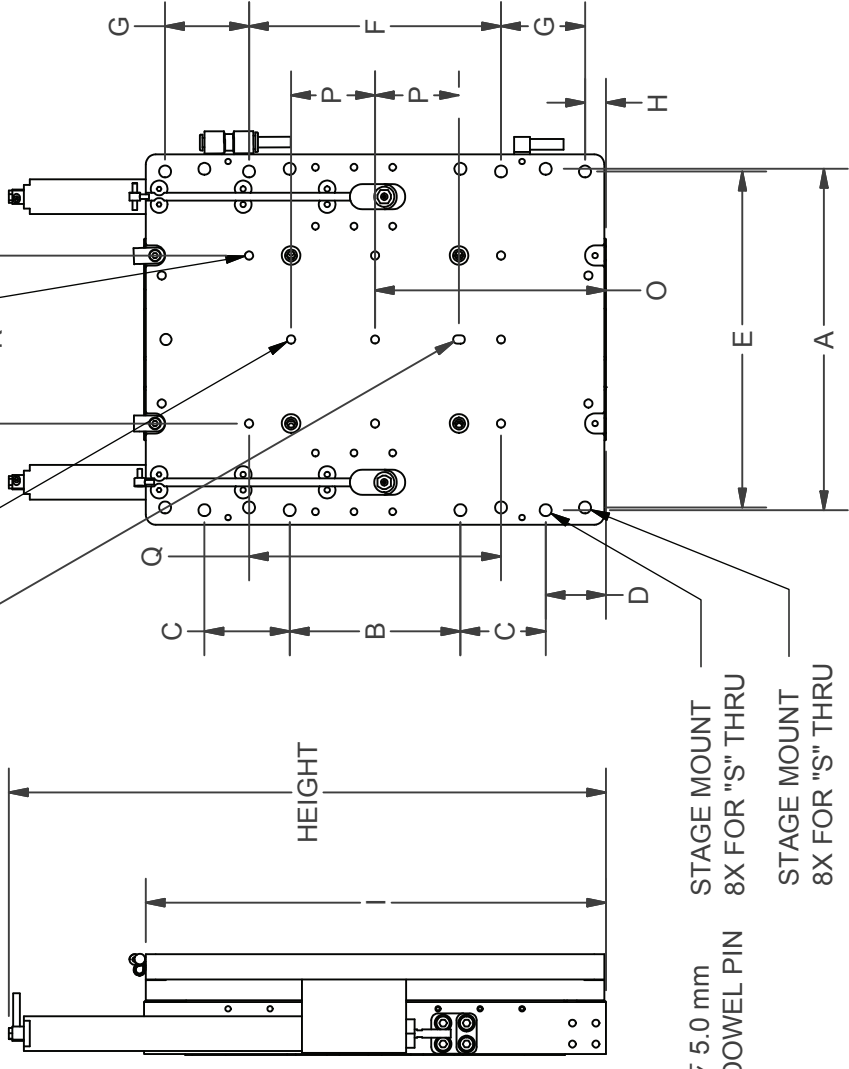


Ø5.03 mm THRU SLIP FIT FOR M5 DOWEL PIN

SLOT Ø5.03 mm THRU SLIP FIT FOR M5 DOWEL PIN

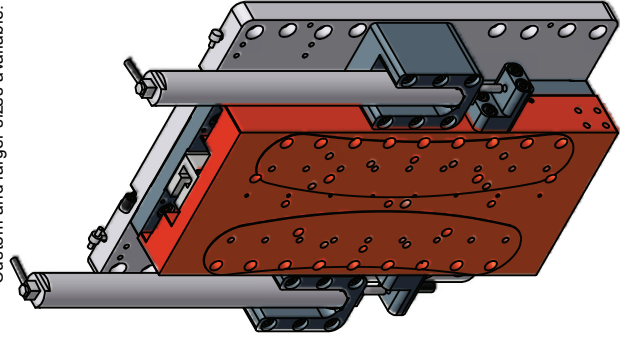


* All units millimeters unless otherwise noted.
 * All hole patterns centered on M5 dowel pin hole at center of stage or base.
 * Custom and larger sizes available.

STANDARD FEATURES

Stage	Z Linear Stage with Pneumatic Counterbalance
Travel	50mm to >150mm
Motor	Ironless Core Linear Motor
Feedback	Non-Contact Optical Encoder
Scale	Gold Tape Scale Optional: Near Zero CTE ZeroMet
Resolution	1Vp-p Analog Output (5nm with 4096 Interpolation) Digital Output Options: 5µm, 1µm, 0.5µm, 0.2µm, 100nm, 50nm, 20nm**, 10nm**, and 5nm** (** Reduced Speeds Apply)
Sensors	Integrated Home and End of Travel Limits
Bearings	High Precision Crossed Roller Bearings
Counterbalance	Frictionless Pneumatic Cylinder
Cables	High Flex, 10M Cycle, 3m Length
Structure	Anodized Aluminum 6061-T6 Optional: Stainless Steel
Environment	Standard Optional: Clean Room and Vacuum (10-6 Torr)
Temperature	0°C to 50°C
Humidity	10% to 80% Non-Condensing
Precision	6-D Nano Precision™ Test Methods

TRAVEL	LENGTH	WIDTH	HEIGHT	A (inch)	B (inch)	C (inch)	D	E	F	G	H	I	J	K	L	M	N	O	P	Q	R	S	T	U
25	220.5	44.5	148	n/a	n/a	n/a	n/a	204	0	30	20	100	50	170	25	60	37.5	50	25	n/a	n/a	M6 OR 1/4-20 (6X)	M4 (6X)	n/a
50	220.5	55	203	8	5	n/a	20.5	200	100	n/a	34	167	84	170	50	60	60	84	40	100	100	M6 OR 1/4-20 (4X)	M5 (6X)	M6
100	220.5	60	282	8	4	n/a	71.2	200	150	25	22	243	122	188	50	60	75	122	50	150	100	M6 OR 1/4-20	M5	M6
150	220.5	60	356	8	4	2	35.9	200	150	50	12.5	274	137.5	188	50	60	75	137.5	50	150	100	M6 OR 1/4-20	M5	M6
200	254.5	70	431	9	4	2	68.4	225	150	50	45	339	170	222	50	75	100	170	50	150	100	M6 OR 1/4-20	M6	M6



ALIO INDUSTRIES PROPRIETARY INFORMATION
 (Tel) 303.339.7500 - SALES@ALIOINDUSTRIES.COM - WWW.ALIOINDUSTRIES.COM



TITLE

AI-LM-(TRAVEL)00-Z-CB-BASE

SIZE B

DWG NO 0010-08031

REV 002

FINISH SEE NOTES

SCALE 1 OF 1

NOTE: MODEL AI-LM-15000-Z-CB-BASE SHOWN.